

Functionality test : Antiviral test

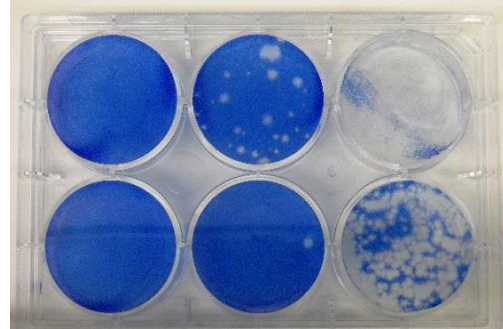
JIS L 1922 : Plaque assay

This is the most common method among the antiviral tests for textile products, also applied to the testing method for SEK mark of Japan Textile Evaluation Technology Council.

Similar Abroad Standard : ISO 18184

【Overview】

Inoculate virus solution on a test sample with antiviral finishes and a control sample (cotton standard cloth) to be compared, then make contact between the fabric and virus for a certain time. After contact, the number of viruses on the sample are determined by plaque assay. Calculate the antiviral activity value by comparing the number of viruses between the test sample and the control sample.



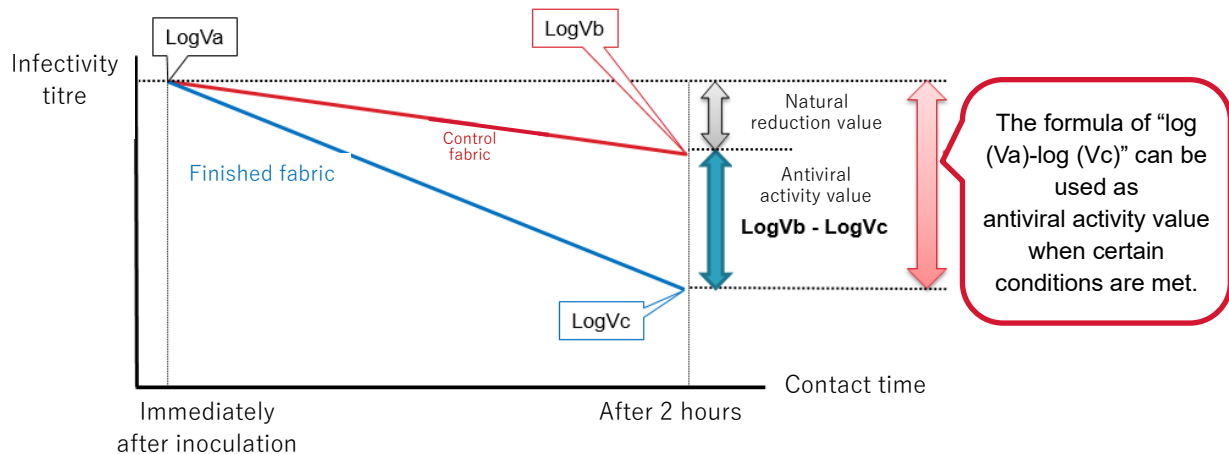
【Evaluation / Reference value】

Evaluate according to antiviral activity value **【Mv】** .

Formula for activity value	Standard	Reference value	Description of the effect
Antiviral activity value [Mv] $\text{LogVb} - \text{LogVc}$ $(\text{LogVa} - \text{LogVc})^{*1}$	JIS*2	$3.0 > [\text{Mv}] \geq 2.0$	Good effect
		$[\text{Mv}] \geq 3.0$	Excellent effect
	SEK	$[\text{Mv}] \geq 3.0$	—

*1 : Formulas that can be used when certain conditions are met.

*2 : Reference standard



Reception for
Antiviral test

Japan
Biochemical Group.
(Biochemical Lab.)
Tel: +81-3-5875-7271


Mv: Antiviral activity value

LogVa: Common logarithm of infectivity titre value immediately after inoculation of control specimen

LogVb: Common logarithm of infectivity titre value after 2H contacting with control specimen

LogVc: Common logarithm of infectivity titre value after 2H contacting with test specimen

【Testing virus】

Virus type		JIS regulation	SEK standards  抗ウイルス加工
Influenza A virus	Sub type H3N2	○	○
	Sub type H1N1	○	—
Feline calicivirus	—	○	○

○: It can be optionally specified according to the usage of the product.

In order to evaluate the washing durability of the finishing in “JEC301 Textile product certification standard with SEK mark”, we also conduct a test for the specimen that was carried out by the washing process defined by the certification standard.

As we correspond to other non-standardized virus tests, please feel free to consult with us.

Head office

2-16-11, Kuramae,

Taito-ku, Tokyo,

111-0051 JAPAN

Tel: +81-3-3861-2341